

# Disaster Preparedness at Home

## Emergency supplies

**Disaster Preparedness—Set aside at least three days' worth of food and beverages, and one week's worth if possible.**

Some commodities may not be readily available in the wake of a disaster. To ensure that you are properly prepared, store at least three days' worth (one week's worth if possible) of the food and beverages you need in your home.

- Food:** Crackers, canned food, instant meals, chocolate, etc. Boil-in-a-bag items are also convenient. Be sure to store easy-to-digest items.
- Drinking water:** 3 liters per person per day, at least three days' worth in total.
- Bathroom items/toiletries, fuel, etc.:** Portable toilet packs, lanterns, dry batteries, matches, portable gas stove, gas cylinders, etc.

## Prepare for an Emergency Go Bag

Place the amounts you need of each item in a backpack so that you can take it with you at any time in case of emergency.

- Water (plastic bottles)
- Tissue paper and wet wipes
- Matches and lighters
- Foodstuffs
- Masks
- Work gloves
- Dishes and cups (paper or plastic)
- Medicines
- Rope and packing tape
- Hats and helmets
- Any regular medications/medication list
- Plastic bags
- Extra eyeglasses
- Toothbrushes, toothpaste, etc.
- Outerwear and underwear
- Thermometer
- Writing materials and memo pad
- Feminine hygiene products
- Thick-soled exercise shoes
- Rain gear
- Disinfectant
- Copy of health insurance card
- Dentures
- Whistle
- Portable toilet packs
- Portable radio
- ID
- Paper diapers
- Food wrapping
- Toilet paper
- Flashlights and lanterns (and extra batteries)
- Cash (including coins)
- Powdered milk
- Toiletries and towels
- Cell phone charger (mobile battery charger)
- Copy of bank book
- Baby bottle

## Disaster risk in your region

Check the disaster risk level in your area referencing the various kinds of hazard maps.

- Yokohama City Sediment Disaster Map (Naka Ward)**  
Areas that may sustain damage due to landslides caused by heavy rains
- Naka Ward Flood Hazard Map**  
Areas where sewers, waterways, etc., are projected to flood
- Yokohama City Urban Flooding Hazard Map (Naka Ward)**  
Areas that may sustain damage due to landslides caused by heavy rains

Note: Evacuation sites noted on the Hazard Map will be opened and made available in accordance with the scale/circumstances of a disaster.

- Waiwai Disaster Prevention Map**  
Various kinds of information to help reduce the impact of disasters (projected seismic intensity, liquefaction risk; risk for specific areas of landslide, tsunami, flooding, urban flooding, high tides, etc.)
- Areas subject to immediate evacuation orders**  
These are areas subjected to evaluation instruction along with sediment disaster alert information. There are nine applicable areas in Naka Ward. Note: Naka Office will contact people living in the areas on an individual basis.

Check the hazard maps on the website. The maps are also available at Naka Ward Office.

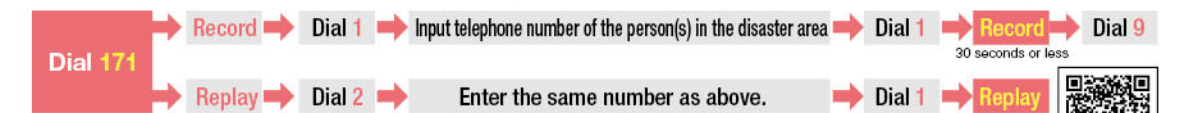
## Disaster Emergency Message Dial system (171)

### Ascertain safety/whereabouts of family members

In the event of a disaster such as an earthquake, everyone wants to ascertain the safety of their family members. Call volumes can be high in areas impacted by a disaster, making it difficult for calls to go through. One way to avoid this situation is for all family members to share information on how to contact a relative in a distant location (not impacted by a disaster), and agree to contact that relative in the event of disaster. In addition, the following services are also available.

Check on the safety/whereabouts of family members using the Disaster Emergency Message Dial system (171).

This voice system activates when call volumes are high in a disaster area and callers are having trouble getting through.



Note: As of August 2012, the Disaster Emergency Message Board (web 171) was enhanced to include smart phone compatibility and add a message registration feature.

Disaster Preparedness

# Prepare for earthquakes

## If an earthquake occurs



**Temporary evacuation site** (small parks, vacant lots, etc.)

These sites are made available for people in an area to come together and ascertain the safety of neighbors, the impact of the disaster in the area, etc., and to evacuate in accordance with circumstances. Temporary sites optionally determined by neighborhood associations, this is the first step toward mutual aid.

**Evacuation area**

Note: Refer to the map for these evacuation sites

Open areas where you can evacuate to escape intense heat or smoke when there is danger of spreading fire.

**Stay at home**

If there is no danger of fire or collapse of your residence, then you do not need to evacuate.

**Local disaster preparedness center (Evacuation shelter)**

Note: Refer to the map for these evacuation sites.

These sites are opened to the public if a seismic intensity (shindo) rating of 5+ or greater is detected in the city, even in one spot. There are 15 such sites in Naka Ward where evacuees can stay.

**Major role of local disaster preparedness center**

- Designated evacuation sites
- Sites stockpiling minimum water and food supplies
- Sites where information on safety of individuals, damage reports and emergency supplies availability are gathered and disseminated

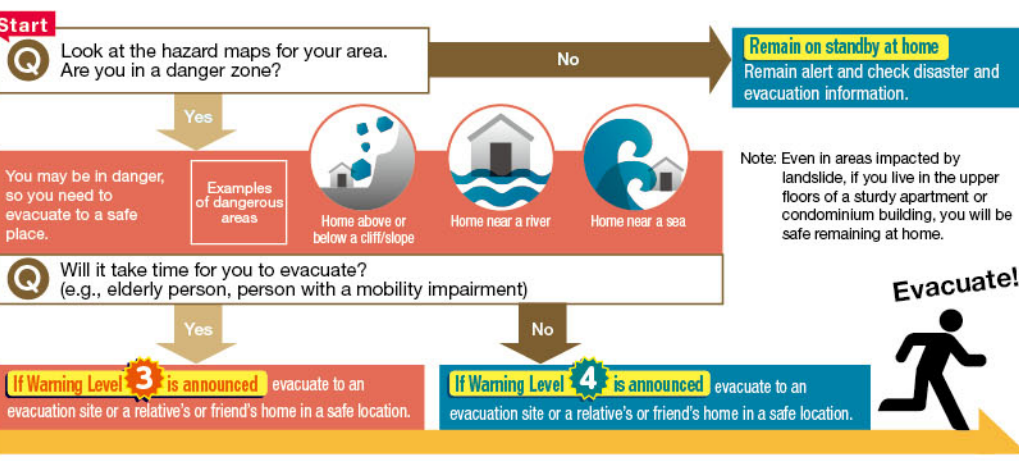
## Evacuating during a tsunami event

### Key points to evacuating during a tsunami event

- Evacuate to higher ground faster**  
When evacuating, get to a place:
  - At least five meters above sea level
  - On the third floor or higher of ferroconcrete buildings that can withstand shaking during an earthquake.
- Do not drive your car to evacuate**  
Do not evacuate with your car (except in cases where you are assisting some with difficulty walking or other extraordinary circumstances). Large numbers of people evacuating by car can cause traffic jams and impede the evacuation process.

# Preparing for heavy rain or typhoon

## What to do in the event of heavy rain or typhoon



## Where do I evacuate? —Evacuate to save your life



**Evacuate to a safe location.**  
Evacuate to an evacuation site, to nearby high ground, or to the home of a relative in a location not subjected to landslide or potential flooding alert.

**Evacuate to the second floor or higher of a robust building or to a nearby tall building.**  
If it is more dangerous to evacuate outdoors, instead take shelter on upper floors of your home, the other side of a cliff, etc.

**Shelter in place**  
Opposite side of cliff/slope

**Take shelter in a safe place inside a building.**  
If it is more dangerous to evacuate outdoors, instead take shelter on upper floors of your home, the other side of a cliff, etc.

Even when no evacuation information has been issued, you can take other actions if you feel danger.

## Evacuation sites in the event of storm and flooding damage/warning levels

At Warning Level 3, evacuation sites will be opened for people located near cliffs/slopes, etc.

Warning Level	Action
5	Life-threatening danger. Take immediate measures to protect your life!
<b>Always evacuate by Level 4</b>	
4	Everyone must evacuate from dangerous locations
3	The elderly and other vulnerable persons must evacuate from dangerous locations
2	Check your evacuation procedures
1	Be on alert for a disaster

Location	Address
Mugita Seifus	1-26-1 Mugita-cho
Yamamoto ES	3-152 Yamamoto-cho
Otori ES	1-251 Honmoku-cho
Kamidai Shukaijo	2-50 Hongo-cho
Minato Sogo HS	231 Yamashita-cho

Note: Additional evacuation sites will be opened in accordance with disaster circumstances. These sites differ from the evacuation shelters that open following an earthquake with a seismic intensity (shindo) of 5+ or higher.

### Ward Office Floor Guide

\*Main/Annex, Naka Public Ward Office

■ Naka Ward Office TEL: 224-8181 (general information) 35 Nihon-odori, Naka Ku 231-0021  
7-minute walk from Kannai Station on the JR/subway lines; 4-minute walk from Nihon-odori Station on the Minatomirai Line; or get off at Satsuma-cho-nakakuyukusho-mae city bus stop

Floor	Division	Counter No., Section, TEL, FAX	Main Services
1	Ward Accounting	Accounting Sec. TEL224-8321, 8322	Revenue and expenditure of public money
	Bank of Yokohama	TEL224-8323	Municipal tax and insurance premium payments
	Certificate Issuance Counter		Family register copy (complete or excerpted); Heisei-revised original family register (complete or excerpted); ID cards; Copies of family register attachment; Copies of resident certificate; Seal registration certificates
2	Family Registry Div.	21 Family Registry TEL224-8291	Receives and processes all registration forms pertaining to the family register such as births and marriages; Copy of nullified family register (complete or excerpted); Permits for burial, cremation, re-burial; Certificate of absence; Certificate of competency to marry, etc.
	Registration	22 Registration TEL224-8298	Issue of My Number Cards; Renewal of digital certificate *Go to Counter No.99 to apply for my number card.
	Registration	23 Registration TEL224-8295, 8296	Accepts notifications of individuals of moving in and out of the Ward; Seal registration; Proof of transfer into public elementary/junior high school; Certificate of non-residence; Special permanent resident certificate
3	Health Insurance and Pension Div.	24 Medical Benefits TEL224-8317, 8318 FAX224-8309	National Health Insurance or Long-term Care Insurance program payments; Advanced Elderly Medical Service System; Medical Expense Subsidy for Children; Medical Subsidy for Persons with Severe Disabilities; Medical Subsidy for Single Parent Families
	Insurance Premium Collection	26 Insurance Premium Collection TEL224-8313, 8314 FAX224-8309	Payment and consultation of insurance premium
	National Pension Sec.	27 National Pension Sec. TEL224-8311, 8312 FAX224-8309	Procedures of National Pension Plan
4	Public Assistance Div.	31 Public Assistance Sec. TEL224-8248, 8249, 8241 FAX224-8239	Public welfare consultation; Determination and implementation of public assistance
	Office Affairs Sec.	41 Office Affairs Sec. TEL224-8155 FAX224-8149	Public assistance payments; Special condolence payments for family member of war dead
	Tax Collection	42 Tax Collection TEL224-8225 to 8237 FAX224-8217	Municipal tax payment, consultations, delinquency resolution, and open sales
5	Municipal Tax	43 Municipal Tax TEL224-8191 to 8193 (Residence tax) TEL224-8196 (Light motor vehicle tax) FAX224-8213	Tax filing for individual municipal/prefectural tax; Light motor vehicle tax
	Housing Tax	44 Housing Tax TEL224-8204 to 8206 FAX224-8216	Survey and assessment of fixed asset (housing) tax; Plus taxation
	Land Tax	45 Land Tax TEL224-8201 to 8203 FAX224-8216	Survey and assessment of fixed asset (land) tax; Plus taxation
6	Tax Certificate Issue Counter	46 Tax Certificate Issue Counter	Taxation Certificate for municipal/prefectural taxes; Registration and disposal of motorized bicycles; Fixed asset assessment certificates (for land, homes, depreciable assets); Residential housing certificate (for pre-owned homes); Tax payment certificate
	Elderly and Disabled Support Sec.	51 Elderly and Disabled Support Sec. TEL224-8161, 8162 FAX224-8159	Offers consultations and accepts applications for health and social welfare programs for the elderly and people with disabilities (age 18 & up); Care-needs assessment applications for long-term care insurance; Applications for specified medical expense coverage (for designated intractable diseases)
	Elderly Support	51 Elderly Support TEL224-8167 to 8169 FAX224-8159	Consultation on nurse care prevention and services out of long-term care insurance; Consultations on dementia and abuse
7	Community-Based Integrated Care Promotion	51 Community-Based Integrated Care Promotion TEL224-8167 FAX224-8159	Issues pertaining to community-based integrated care systems, and support for community-building
	Long-term Care Insurance	52 Long-term Care Insurance TEL224-8163, 8164 FAX222-7719	Certification of long-term care required for long-term care insurance; Support for in-home long-term care assistance providers
	Disabled People Support	53 Disabled People Support TEL224-8165, 8166 FAX224-8159	Physical disability certificate; Intellectual disability certificate (Ai no Techou) (age 18 & up); Health and social welfare services for persons with disabilities; Mental disability certificate; Support for individuals with intractable diseases
8	Children and Families Support Div.	54 Children and Families Support Sec. TEL224-8171, 8172 FAX224-8159	Mother and Child Health Handbook; Child allowance; Medical checkup for infants; Social welfare services for single-parent families; Consultations on social welfare services for women; Consultations on child-rearing; Enrollment in nursery school; Physical disability certificate; Intellectual disability certificate (Ai no Techou) (under age 18); Consultations and application for health and social welfare services for children with disabilities (under age 18)
	School Cooperation and Children Support	54 School Cooperation and Children Support TEL224-8139 FAX224-8159	After-school childcare; Incorporation of region and school

### Ward Office Floor Guide

Floor	Division	Counter No., Section, TEL, FAX	Main Services
6	General Affairs Div.	61 General Affairs Sec. TEL224-8112 to 8114 FAX224-8109	Disaster prevention; Certificate of damage caused by a disaster (except fires); Temporary license plates; Certificate of change in town name/district numbering; General affairs
		61 Budget Adjustment Sec. TEL224-8115 FAX224-8109	Government building management; Accounting (budgeting, account book closing)
6	Ward Administration Promotion Div.	62 Statistics and Elections Sec. TEL224-8116 to 8119 FAX224-8109	Statistical surveys; Elections; Absentee voting; Election information; Elections Committee; Application for voting from overseas
		63 Public Relations Sec. TEL224-8121 to 8123 FAX224-8214	Professional consultations (legal, notary services, administrative scrivener); Public hearing; Public relations; Information disclosure
6	Community Promotion Div.	63 Planning and Adjustment Sec./Community Planning and Development Coordination TEL224-8127 to 8129 FAX224-8214	Planning pertaining to major business in the Ward; Ward management policy; Consultations on regional community-building; Yokohama City Master Plan; Naka Ward Plan; Consultations pertaining to unused homes (building, vegetation in neighboring areas)
		64 Community Activities TEL224-8131, 8132 FAX224-8215	Promotion and coordination of neighborhood association; Promotion of crime prevention and traffic safety campaign; Abandoned bicycles prevention strategies
6	Community Promotion Div.	64 Resources Reuse Promotion TEL224-8140 FAX224-8215	Promotion of "Yokohama 3Rs"; Town beautification campaign; Illegal dumping prevention strategies
		64 Community Empowerment Promotion TEL224-8136 FAX224-8215	Support for civil regional management
6	Community Promotion Div.	65 Culture, Sports and Youth Coordination TEL224-8134, 8135, 8137 FAX224-8215	Promotion of physical exercise and culture; Sound upbringing of youth
		65 Civic Activities Support TEL224-8134, 8135, 8137 FAX224-8215	Administration of facilities for ward residents

- The parking lot (capacity of six vehicles) is on the 1st basement floor.
- There is a nursing room on the 5th floor.

### ■ Naka Ward Office Annex

Floor	Division	Counter No., Section, TEL, FAX	Main Services
4	Health and Welfare Div.	401 Administration Planning Sec. TEL224-8151, 8152 FAX224-8157	Social worker; Child committee
		401 Project Planning TEL224-8330, 8331 FAX224-8157	Regional health and welfare plan; Administrative operations for Community Care Plazas/a base for health and welfare support
		402 Health Promotion Sec. TEL224-8332 to 8334 FAX224-8157	Vaccinations; Prevention of tuberculosis and other infectious diseases; HIV testing; Cancer screening; Hepatitis treatment medical expenses subsidy; Compensation for atomic bomb victims; Lifestyle diseases/dietary consultations
4	Health Sanitation Div.	411 Food Sanitation Sec. TEL224-8337, 8338 FAX681-9323	Consultations on preventing food poisoning as well as food hygiene; Applications for food businesses; Applications for pharmacies; Applications for medical professional licenses
		412 Environmental Sanitation Sec. TEL224-8339, 8340 FAX681-9323	Applications for businesses pertaining to environmental health and sanitation (beauty salons, dry cleaning services, hotels, etc.); Consultations on extermination methods for bees and other pests; Dog registration; Consultations on dogs and cats, etc.

- The Nakana Cafe, Naka Ward Community Activity Center, and Naka International Lounge are located on the 1st floor.
- There is a nursing room on the 2nd floor.

■ Naka Public Works Office TEL: 641-7681 FAX: 664-6196 246 Yamashita-cho. Naka Ward 231-0023  
Seven-minute walk from JR Ishikawa-cho Station, or get off at Yashihama-bashi city bus stop

Floor	Division	Counter No., Section, TEL, FAX	Main Services
2	Naka Public Works Office	Administration Sec.	Occupancy permits for roads, sewerage and waterways; Issues pertaining to utility and road boundary; Private road management subsidies; Permits for occupancy, utilization, and installation, as well as management of nearby parks
		Road Sec.	Management and maintenance of roads and street trees; Construction supervision
		Sewerage and Park Sec.	Management and maintenance of sewerage, waterways and parks; Construction supervision; Park Protection Association operations

# NAKA-KU

## Ward Resident Life Activity Map

### Disaster prevention information



<https://www.city.yokohama.lg.jp/naka/naka-lang/en/>

Inquiries for the City Hall or Ward Office **Yokohama City Call Center**

TEL 664-2525 (open daily 8 am-9 pm including Saturdays, Sundays, and holidays)

Issued October 2021